

# OJ Drives®



## OJ Drives controller

- Ideal for energy renovation & retrofit projects
- Controls up to 32 drives
- Intuitive menus (English & German)
- Modbus communication
- 3.5" colour touch screen

### OJ-VCH-HMI3-6132

#### Created with energy renovation in mind

Specifically designed for energy renovation projects, this compact, user-friendly unit offers cost-effective control for your ventilation system. You also get control and an intuitive touch-screen interface built into a single product.

#### Ideal for replacing single fans with several

The controller is ideal for retrofit projects where you replace a single, big fan unit with several smaller fans and need a common controlling device. Capable of controlling up to 32 drives/fans, the OJ-VCH makes it easy for you to create and install more energy-efficient systems for your clients.

#### Powered through the drive

The OJ-VCH ventilation controller is powered via the connected drive, receiving +24V DC through the supplied Modbus RJ12 cable. If you expand your system with an OJ Electronic pressure transmitter, setting up the pressure transmitter is easily done via the touchscreen menu. The pressure transmitter is supplied with power from the connected drive.

#### The functions you need

Simple, compact and easy to install, the OJ-VCH ventilation controller includes all the features required by most retrofit projects.

#### Fan speed options

You can control the speed of the fans directly – or regulate fan speeds depending on the flow or pressure in the ventilation system.

#### Control via display or signal

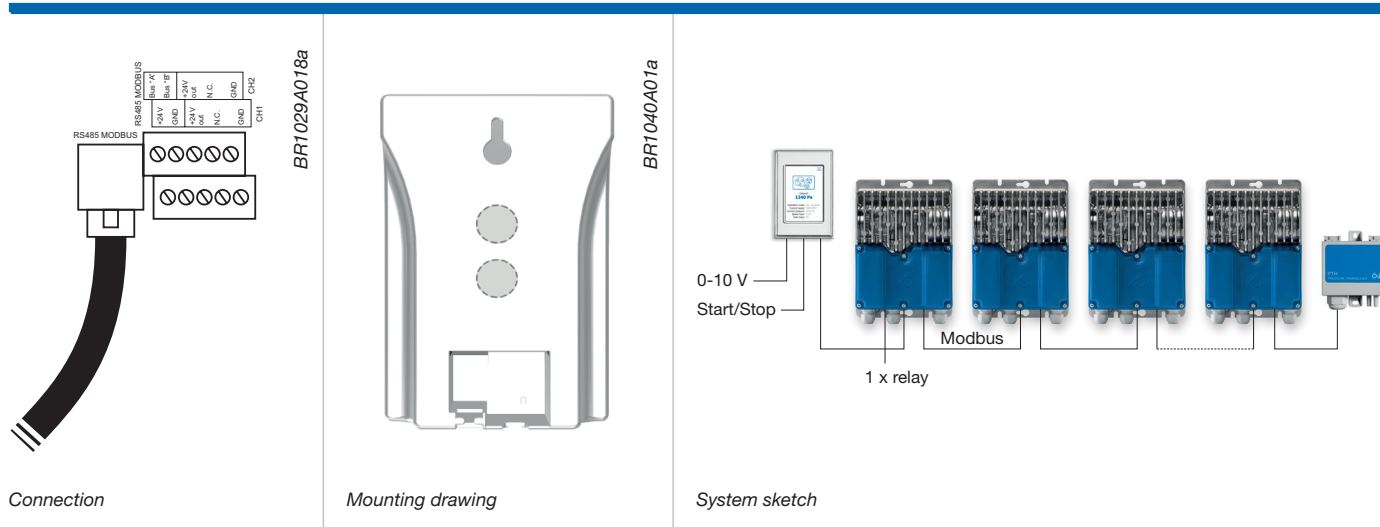
The requested speed, pressure or flow can either be controlled directly from the user-friendly 3.5" touch display or via a 0-10V analogue signal.

#### Digital input – start/stop

The controller comes with a digital input that can be configured as a start/stop signal.

#### Alarm relay option

If you want alarms in the event of system faults, a relay option module can be placed in just one of the connected drives and selected from the on-screen menu as a common system Alarm relay.



Connection

Mounting drawing

System sketch

### Installation

OJ-VCH-HMI3-6132 can be fitted onto a flat surface using either a screw or magnets where appropriate. The rear of the HMI unit has a keyhole-shaped hole for hanging the unit on a screw that has been screwed into a flat surface. Additional the black protective cover contains two magnets. The HMI can thereby be fitted onto a vertical flat metal surface using the bumper cover.

### Cable connections

The OJ-VCH-HMI3-6132 is connected to the first drive in the system using a Quick Plug™ Modbus connection and a standard telecom cable.

### CE marking

OJ-VCH-HMI3-6132 fully complies with the following directives:  
 EMC Directive EN 61000-6-2 & EN 61000-6-3

### System

The OJ-VCH-HMI3-6132 is an all-in-one controller build up around a 3.5 inch user friendly touch display.

A system can contain up to 32 drives/fans, and a single common pressure transmitter is enabling flow or pressure control. All setup and configuration for the system is done from the OJ-VCH

### PRODUCT PROGRAMME

TYPE	PRODUCT
OJ-VCH-HMI3-6132	Drives ventilation controller

### TECHNICAL DATA

Display	3.5" TFT colour touchscreen
Supply voltage	24 V DC ±10%
Power consumption	< 0.9 W
Electrical connection	screw terminals, max. 1 mm <sup>2</sup>
QuickPlug™ Modbus	1 x RJ12 (6P6C)
Ambient operating temperature	-10/+40°C
Dimensions	80 x 121 x 42 mm
Installation depth	22 mm
Enclosure	IP21
Weight	190 g