

# FMS EASY SETUP



Floor Management System Easy Setup

67553 10-15 (MZ)



**1**

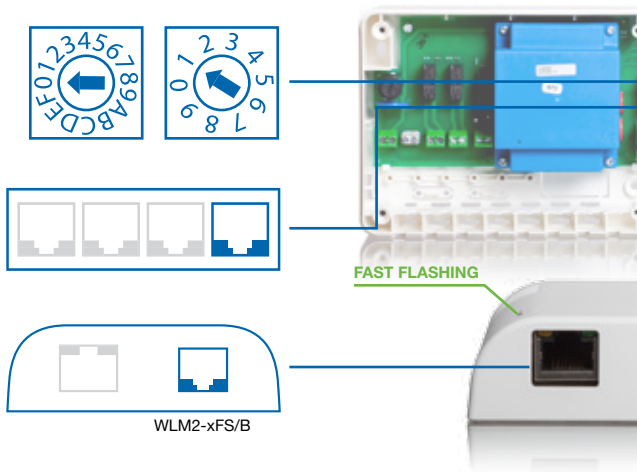
Connect your **FMS BOX** to **WLM2-xFS/B** in standard or network mode.

## STANDARD MODE

(WLM2-xFS/B + WLM2-xAO)

1. Remove **WLM2-xFS/B** master cover.
2. Make sure that the **WLM2-xFS/B** master is set to **01**.
3. Connect the **RJ11** cable to the **first WLM2-xFS/B** master port.
4. Connect the **RJ11** cable to the port of the **FMS BOX**.

**IMPORTANT NOTICE** Connecting the RJ11 cable to the Internet socket of FMS BOX will cause permanent damage to the device.



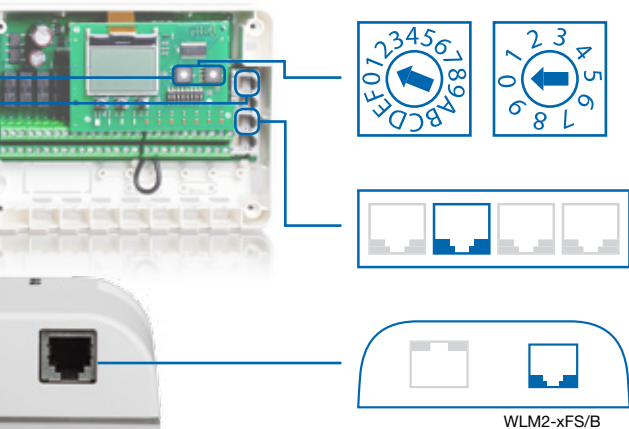
**IMPORTANT NOTICE** If it is first run green led should flashing fast. If green led is

## NETWORK MODE

(WLM2-xFS/B + WLM2-xFS or WLM2-xFS/B + WLM2-xBA)

1. Remove **WLM2-xFS/B** master cover.
2. Make sure that the **WLM2-xFS/B** master is set to **10**.
3. Connect the **RJ11** cable to the **third WLM2-xFS/B** master port.
4. Connect the **RJ11** cable to the port of the **FMS BOX**.

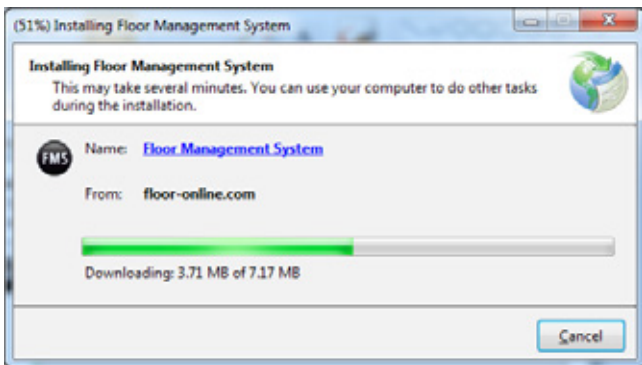
**IMPORTANT NOTICE** Connecting the RJ11 cable to the Internet socket of FMS BOX will cause permanent damage to the device.



not flashing please check connection. If it is not first use green led will be still light.

2

Go to <http://floor-online.com> webpage from PC or notebook and install or launch the FMS DESKTOP software or go to <http://m.floor-online.com> webpage from mobile device and configure FMS BOX in online mode via FMS MOBILE.

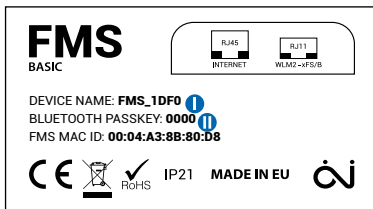


3

Run **FMS DESKTOP** software in **Bluetooth** (supported in Windows Vista/7/8) or **Online** mode.

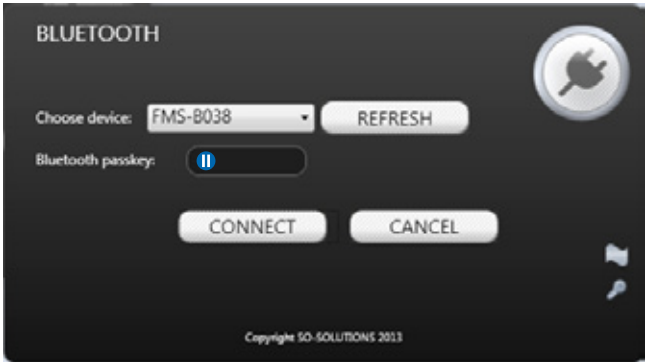
## FMS DESKTOP BLUETOOTH MODE

1. Make sure that your **Bluetooth adapter** is **turned on** and works correctly.
2. Choose your **FMS BOX NAME** (the same as on back FMS BOX cover).



**IMPORTANT NOTICE:** If you cannot see your FMS BOX please check distance between your computer and FMS BOX. The maximum distance is 20 meters.

3. Pass your **BLUETOOTH PASKEY** (the same as on back FMS BOX cover)



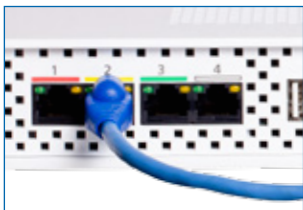
4. **Configuration Wizard** will start automatically. When you finish wizard correctly – **green led** on the FMS BOX will be **still light**.

STILL LIGHT



## FMS DESKTOP AND FMS MOBILE ONLINE MODE

1. Connect **RJ45** cable to **FMS BOX** and **router or Internet WAN** socket.



2. Run **FMS DESKTOP** application for **PC** or **notebook** or go to <http://m.floor-online.com> from your **mobile device** like smartphone or tablet.
3. If you choose **FMS DESKTOP** software You should change default application working mode to **ONLINE**.



4. You do not have an **account** yet you should create an account in **FMS Online Service**.



LOGIN PANEL

Your user name

Your personal password

New to FMS Online? [create account](#)

Forgot your password? [reset password](#)

Copyright SO-SOLUTIONS 2013

The desktop login panel features a dark grey background with a globe icon in the top right corner. It includes two input fields for 'Your user name' and 'Your personal password'. Below the input fields are two buttons: 'SIGN IN' and 'CANCEL'. At the bottom, there are two links: 'create account' (highlighted with a blue circle) and 'reset password' (in green text). A copyright notice 'Copyright SO-SOLUTIONS 2013' is at the very bottom.



FMS

Your user name

Your personal password

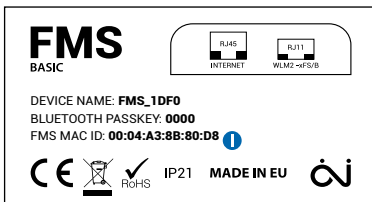
New to FMS Online? [create account](#)

Forgot your password? [reset password](#)

The mobile login panel is shown on a smartphone screen. It has a white header bar with the text 'FMS' in the center. Below the header are two input fields for 'Your user name' and 'Your personal password'. A 'SIGN UP' button is positioned below the password field. At the bottom, there are two links: 'create account' (highlighted with a blue circle) and 'reset password' (in green text).



5. Register your **FMS BOX** in **FMS Online Service**.



REGISTRATION

FMS MAC ID: ⓘ

Building name: \_\_\_\_\_

Your user name: \_\_\_\_\_

Your personal password: \_\_\_\_\_

Confirm password: \_\_\_\_\_

REGISTER CANCEL

The image shows a dark grey registration form. At the top left, the word 'REGISTRATION' is written in white. Below it are five rows of labels followed by input fields: 'FMS MAC ID:' with a blue information icon, 'Building name:', 'Your user name:', 'Your personal password:', and 'Confirm password:'. To the right of the input fields is a large, circular, metallic-looking globe icon. At the bottom of the form are two rounded rectangular buttons labeled 'REGISTER' and 'CANCEL'.



6. **Configuration Wizard** will start automatically. When you finish wizard correctly – **green led** on the FMS BOX will be **still light**.

STILL LIGHT



4

Now **you are ready** to take full advantage of the capabilities of the **FMS**.

## BLUETOOTH MODE in FMS DESKTOP

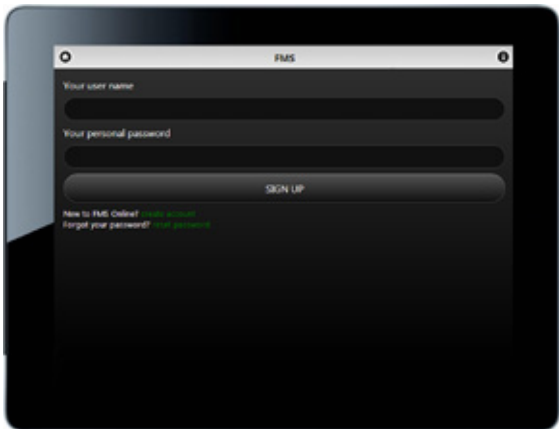



## ONLINE MODE in FMS DESKTOP



## ONLINE MODE in MOBILE DEVICES

 <http://m.floor-online.com>



**IMPORTANT NOTICE** For more information go to  **FMS USER GUIDE.**